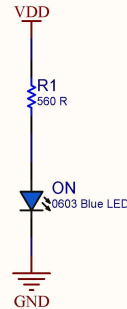
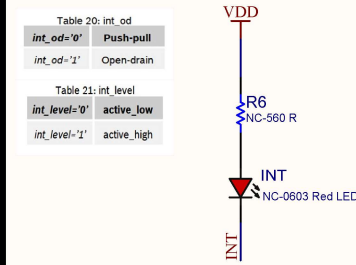


POWER SEL



POWER LED



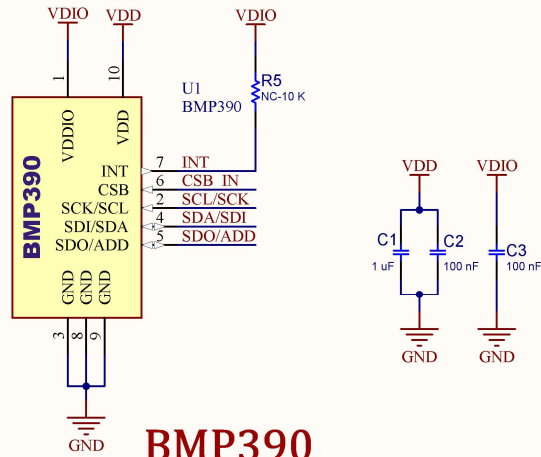
INTERRUPT LED

Table 20: int_od

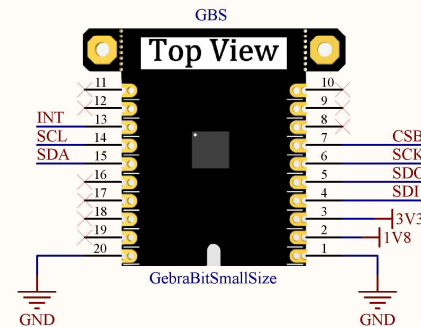
int_od='0'	Push-pull
int_od='1'	Open-drain

Table 21: int_level

int_level='0'	active_low
int_level='1'	active_high

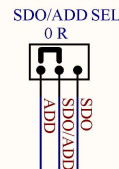
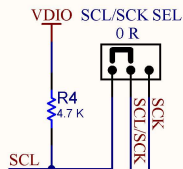
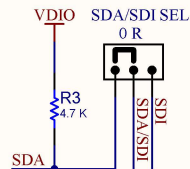
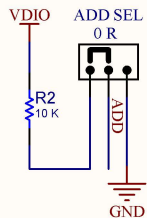
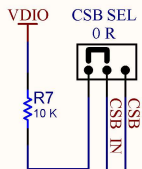


BMP390

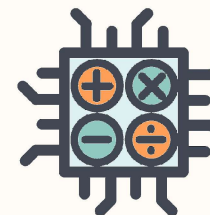


GEBRABIT PINOUT

I2C IS SELECTED BY DEFAULT



PROTOCOL SELECTOR



GebraBit		
HTTPS://GEBRABIT.COM/		
Title:	GebraBit BMP390 Schematics	Variant: [No Variations]
Page Contents:	GebraBit BMP390 Circuits	Checked by:R.A
Size:	SMALL	SKU CODE: GB636EN
		Revision: V2.0
Date:	05/28/2023	Designed by: GEBRABIT
		Sheet 1 of 1